

BUCK ROCK

by Cliff Ellery

Introduction

Sitting high on the south west ridge of Mt Te Aearoa, Buck Rock is an impressive fin of rock 60 – 90m tall and over 500m long. There are a few reports of climbers visiting and climbing at Buck Rock over the year but the first report ascents was made by Grant Pearson and Co up the western buttress and arete. In 2006 Kevin Barrett and Richard Knott visited Buck Rock and put up the 2 pitch line of “Demo of Bosh”. Kevin then returned with Stephen Barrett and added 3 more routes. Kevin continued to preach “to anyone that would listen” about how good this crag was and the enormous potential for new routes but he failed to drum up any interest and when he moved down south development stopped. A little slow on the up take I may be, but in late 2009 I return to the crag and allong with other local Hamilton climbers started to develop Buck Rock. As it turns out Kevin was right, the climbing is great, the rock quality is great, the outlook is fantastic and the potential for long single or multi pitch climbs is enormous.

Access

From Te Aeroa Drive South down Te Aeroa Gordon road, about 2 km out of town turn left down Waiorangomai road, 1km on park at the old Waiorangomai settlement and gold mine. From here Buck Rock is a 40min walk up the hill. Take the upper loop track then the Buck rock track, from this junction 20 mins walking get you to within 250m of the base of Buck Rock. From here look for a rough climbers track marked with orange and blue tape on your left. A steep climb up the hill past an old mine shaft pops you out at he base of the cliff.

You will need up to 12 Quickdraws. A couple of the routes have Trad gear (Cams and wires) but most are sport.

Disclaimer

The author, publisher, and landowners take no responsibility for damages, injury, disability, or death resulting from the use of this guide. This guide does not guarantee any of the fixed gear, including bolts, peg, or belays mentioned in this guide. All fixed gear is to be used at the climbers own risk. Ownership of the guide does not grant you entry onto the property or crag. No responsibility is accepted for the accuracy of the information in this guide. Climb at your own risk.

www.freeclimb.co.nz Number One, for up to date Rocking Climbing Information.



*For the best rock climbing
experience in New Zealand*

- * **New Zealand's Best Gear Shop**
- * **Cafe** , **Accommodation**
- * **Instruction** **Gear Clinics**
- * **Workshops** **Guiding Service**
- * **Hire Gear (Ropes)** **Crag Information**
- * **Run by Climbers for Climbers**

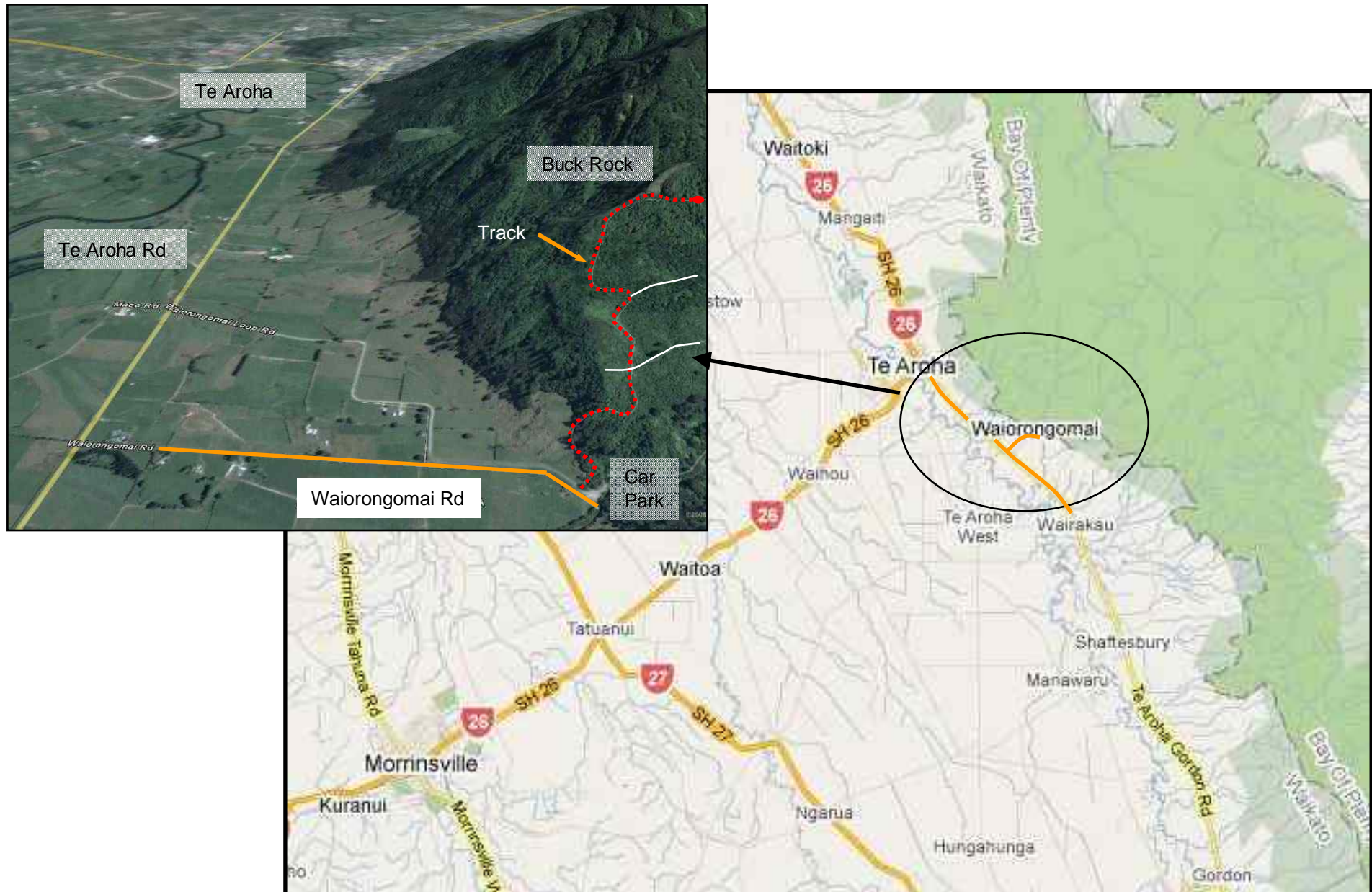
for more information visit www.rockclimb.co.nz . Email bryce@rockclimb.co.nz
Telephone / Fax (07) 872 2533
1424 Owairaka Valley Road

Wharepapa South
RD 7 Te Awamutu
New Zealand

freeclimb.co.nz

www.freeclimb.co.nz
Number One, for up to date
Rock Climbing Information

Figure 1 – Map



BUCK ROCK

The track meets the cliff at the line of Premiere. Demo the Bosh start a further 30m left (down the hill.) Further on at the extreme left hand-end of the crag is

Arete Route (15)

Climb the arte on gear .
Grant Pearson & Co

* Demo of Bosh (19) 60 m

Pitch 1 (19). Traverse out left on a rata covered ledge to the first bolt. then move up and left to the second bolt. From here the line of bolts heads straight up the face however the climbing does weave its way up the line of weakness. At about the 10th bolt move out right to a large ledge and DBC belay (10 Bolts)
Kevein Barret , Richard Knott 2005.
Pitch 2 (15). Step back left then climb the groove to the roof, traverse left around the roof and then up the groove, easy climbing to top. (Pro 5 bolts)
Richard Knot, Cliff Ellery 2006.

* Climba Sutra (20) 25m

Climbs the white rock underneath the large roof system. Follow the line of bolts out to the left hand end of the roof. From here powerful but delightful moves lead through the small roof. Continue up the steep ground above to the DBC belay. (Pro 8 bolts)
Brian Mercer and Cliff Ellery, 21 Feb 2010

Pioneer Route (15) 12m

A 2 bolt climb lead "on site" to gain access to the belay ledge of Au Reviour. An old piton (since gone) near the top suggest the route may have been attempted by someone in the past. (Pro: 2 bolt, Wires, Cams DBC belay)
Stephen Barratt 2005

Buckle (16) 12m

Climb straight up the buttress directly below the roof to the belay of Pioneer Route. (Pro 4 bolts "staples")
Cliff Ellery, Madeleine Van Den Braak and Dylan Ball, 21 Feb 2010

Under Pressure (closed Project)

Having climbed Buckle stay left and blast through the roof. (Pro 4 bolts)

* Au Revoir (19) 25m

Climb the blunt arete and steep face. Move left near the top and climb the red rock and groove to the DBC Belay. (Pro 6 bolts)
Kevin Barratt 2005

** Première (21) 25m

Climb up the low angle ramp past one bolt then move left to second bolt and blast up the steep ground above. Getting to and past the 3rd bolt is the crux, however the move through the roof takes a bit of commitment. DBC Belay 6 bolts
Stephen Barratt 2006

* Bring Back Buck (18) 45m

Pitch 1 (18) 25m. Start as for *Preimere* but stay right after first bolt. Clip second bolt then traverse right above the roof past the 3rd bolt to the large ledge (crux). From here climb up the steep groove, move right at the last bolt then up the ramp to DBC belay. (Pro: 8 bolts)
Cliff Ellery, Brian Mercer, Dylan Ball. Nov 2009
Pitch 2 (18) 20m. Climb the face then bridge groove. 6 bolts, DBC belay.
Cliff Ellery & Rachel Mayne. Dec 2009

** Pass the Buck (20) 50m

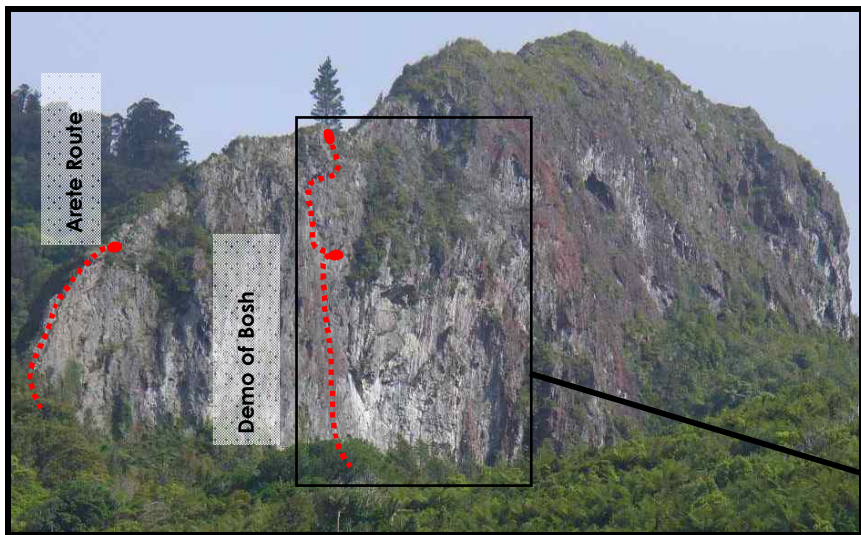
Pitch 1 (18) 25m. Start 10m right of BBB. Climb groove right of lower roof. Continue up the face tending right then through blocky ground to the belay ledge and DCB belay. (Pro: 8 bolts)
Cliff Ellery, Dylan. Dec 2009
Pitch 2 (20) 25m. Climb up the ledge to the right of the belay clip second bolt then move left and power through the over hanging rock to the large sloping ledge. Traverse right and then up through groove (awkward). Follow the groove moving right at the top to the DBC belay. (Pro 7 bolts)
Cliff Ellery & Rachel. Mayne 22 Dec 2009

10m to the right. Follow a rough track up and right to a ledge system and the line of

Red line "n" it at buck (17) 20m

Climb the face and groove to the belay ledge of "Pass the Buck". (pro 4 bolts)
Richard Knott , Stewart Hope. 21 Feb 2010

5m to the right. The next 3 routes all start at the same point.



Topo 1 Buck Rock



Photo 1. Cliff Ellery on Preimere.

